

Car - DVR

User Manual

User Instruction of Tachograph

App Installation and connection Instruction

Connect the App with Car DVR via Android platform or iPhone(iOS)

platformApp installation and operation

1. App download and installation
For android system, please download "Viidure" from Application Market(Figure1A: GooglePlay/PlayStore for Android)and install it (Please see Figure1 for its QR code).For IOS system, please search "Viidure" at App Store(Figure2A:AppStore for IOS) and install it (Please see Figure2 for its QR code).

1. Download viidure

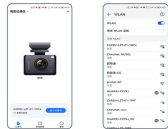
- (1). iPhone
Search "Viidure" on AppStore
- (2). Android Phone
Search "Viidure" on Google Play



2. Connect Mobile phone with tachograph by WIFI.

- (2). Mobile phone with DVRWIFI connection

open "Viidure", enter the mobile phone WIFI interface to select "CARDV..." hotspot, enter your password: 12345678

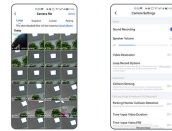


WIFI hotspot: CARDV...
password: 12345678

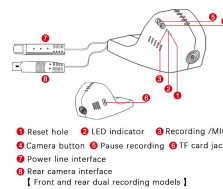
3. Top left corner "+WLAN" return APP connection.



4. DVR function introduction



Product structure and key description



Power button: in recording mode, short press to pause recording long press for 3 seconds to power off. When operating menu, Short Press to confirm selection. When WIFI connection has been built, Short Press to cancel the connection.

Photo button: in recording mode, press short to take photos, and press long for 5 seconds to restore factory Settings.

Reset
Short Press to restart the device if the Car DVR crashed.

Indicator light (RED Light/Blue Light)

RED Light: Blinking when WIFI is connected, long on when WIFI is not connected.

Blue Light: The blue light flashes when recording and is steady when stopping recording.

Use automatic recording function

The Car_DVR will power on and start recording automatically when the car starts, and the Blue indicators will be strobing. The Car_DVR will save therecords and power off automatically when the car engine turned off. Therecorded images will be saved on memory card as clips. When the memory card is full, the new clips will cover old clips.

[Note] The default recording time is 1 minutes, then loop record.

Installation Guide

Before installation please check if the accessories are all available, if there is any missing, Please contact our customer service for further help.

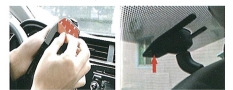
Before installation, ensure that the car is turned off before installation.

Installation steps for reference!

1. Turn off the car engine.
Insert TF-Card into Card Slot on the Car DVR properly. [Note] Please use high speed TF-Card (above Class10). The maximum supported volume is 128GB.



We suggest to install it near Rearview mirror or in the middle, it is a better choice to install Center vertical:



2. Confirm the position, wipe the position with clean cloth, do not leave any dirt.
3. Find the matched 3M double side tape. Tear the tape, Paste it to the selected install position.



Please read carefully
before installation

Rainware installation steps

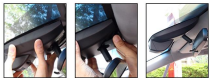
1.Remove the original shell



2.Unplug the rain sensor and plug in the DVR rain sensor cable



3.Installation complete

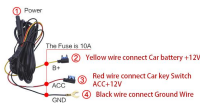


-6-

Installation instructions for taking power from the fuse box



-7-



Explain with notes

Car Battery +12V	Refers to the power that is not controlled by the key switch of the car, after the car is closed, there is still a voltage output, for example: car interior light, Car Emergency flasher, brake light, etc.
Key Switch ACC +	Refers to the car key switch: control of the power supply, the key is inserted into the rotation that has power, pull out the key that power for example: Car Galette liabter, Car FM Radio
Ground Wire	Negative pole Usually locked in iron screw

Tip: Format the TF card once every other month, back up the data needed before, and for mat it. Periodically formatting the DVR memory card prevents data loss and normal use of the DVR

-8-

SPECIFICATIONS

Hardware Spec	
CPU	Nvidia 960X
Display	Mobile APP display, computer play video
Front camera resolution (Fittings Selection)	FHD1080P/1920*1080P FHD1600P/1440*1600P FHD81360P*5160P
Rear resolution (Fittings Selection)	VGA640*480P FHD120P/1280*720P FHD1080P/1920*1080P
video format	H.264/H.265 MP4/TS/JPEG
recording	support
Parking monitoring mode	Collision wake after sleep
Built-in WIFI	Built-in 2.4 wireless WIFI video transmission, supporting smartphone APP to view and play videos
Video output regional	NTSC
Storage	Support TF card 8-128G (above CLASS10)
Input voltage	12V

Common troubleshooting

Why can not I turn on the DVR?

A: Make sure you connect the power of your car when you run the device.Or it can not work well

Q: how to set the date and time of the DVR?

A: connect your phone with wifi and the date and time will be updated as your phone does

-9-

Q: How to understand that the DVR is recording or not?

1 If you turn off the phone's connection via wifi, the blue LED keeps the light, the blue is the flash, it is recording.

2 If you connect the phone via Wi-Fi, the red and blue LED flash is recording.

Q: The APP cannot connect to the DVR?

A: Please make sure that the TF card is faulty or the recorder indicator is blinking on.TF card is pulled out, boot to test whether there is a WIFI hotspot, if there is a WIFI hotspot connection required Replace the TF card, if the WIFI still cannot be connected, use the thumb against the [reset] hole to restart the system

B: Try to turn off the Bluetooth and mobile data of the mobile phone, and then connect

Q: Recorder cannot record?

Please ensure that the TF card is properly inserted and formatted on the machine as far as possible TF card. Confirm whether the TF card is a high-speed Class10 brand original card.

Q: Forgot WIFI password or can't find WIFI?

Press and hold the camera button for 5-10 seconds to resume Factory setting, factory default account CARDV..., password: 12345678

-10-

Q: How to format memory card?

Open APP to connect recorder WIFI and enter recorder Settings Click Format memory card

Q: The photo button doesn't work

Check whether the key bar cable is loose or damaged

Q: The recorder did not record or recorded a noise

A: There is no sound in the recording. Check whether the key cable is loose

B: Recording noise, it may be the WIFI antenna dry up, check the DVR WIFI antenna, move to change the position

Q: The car starts the DVR and automatically shuts down one minute

Check whether the red line ACC is powered on

The mobile phone system compatibility problem may cause that the APP cannot be downloaded and cannot be enabled, the following reference APP, download and try.



Timacam

Roadcam

-11-