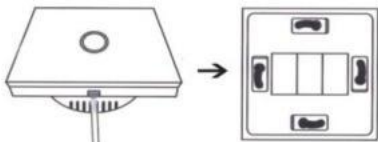


## PRODUCT DESCRIPTION

Remove the panel with screwdriver

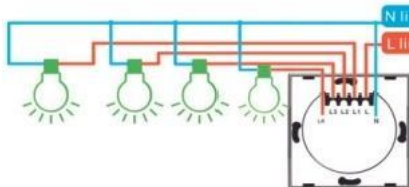


Make sure electricity is cut off during the installation

## INSTALLATION WIRING DIAGRAM

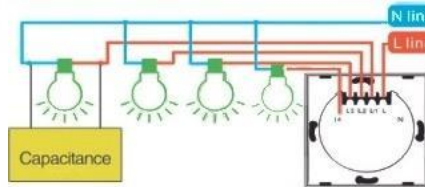
The switch with "N"terminal supports the following wiring mode

- A.Fire wire connects "L"terminal
- B.Lamp wire connects "L1,L2,L3,L4"terminal
- C.Neutral wire connects "N"terminal



Switch supports single live wire working can be wired in the following way

- A.Live wire connects "L"terminal
- B.Lamp wire connects "L1,L2,L3,L4"terminal
- 1gang connects "L2"terminal
- 2gang connects "L1,L3"terminal
- 3gang connects "L1,L2,L3"terminal
- 4gang connects "L1,L2,L3,L4"terminal
- C.Capitance connects first lamp wire and neutral wire.



## HOW TO DOWNLOAO APP

1.Scan the QR code below or search Smart Life in IOS APP store or Google play.



2.Download &Registration  
A.Scan theQR code to download "Smart Life"Application

B.Enter the register/login interface,input the phone number for getting verification code to register or through other methods at the bottom of page jump to related authorization interface to login.



## WIFI PARING METHODS

1.RF433mhz setting mode

Touch the switch button for a long time until the button's blue backlight flashes once,leave the switch button,and press the remote controller button (which need study's button)to complete the setting.

2.RF code delete method

Touch any switch button for a long time until the button's blue backlight flashes twice,leave the touch button,then automatically clear all RF control function on the switch.

3.WIFI setting mode(Easy mode)(If the switch flashes quickly after power on,you can go directly to the wifi to learn)

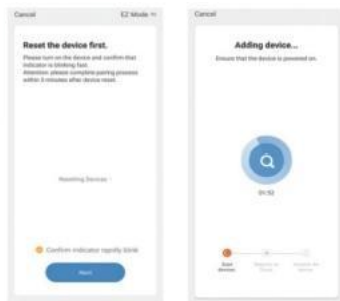
A.Touch any button on the switch for a long time,until the button's blue backlight flashes alternately and quickly, then leave the touch button,

B.Open the"Smart Life"or "Tuya Smart"APP,click the "+" icon in the upper right corner,select the switch (WIFI), enter the WIFI password,and start the setting according to the prompts untilthe setting is completed.

4.WIFI configuration(AP mode)

A.Touch any button on the switch for a long time,until the button's blue backlight flashes alternately and slowly,then leave the touch button,

B.Open the"Smart Life"or"Tuya Smart"APP,click the "+" icon in the upper right corner,select the switch (WIFI), enter the WIFI password,and start the setting according to the prompts until the setting is completed.



## PRODUCT FEATURES

- Works with Amazon Alexacommanded by your voice.
- Control your home with your smartphones appor tablets form anywhere at anytime.
- Timing switch to tum ON/OFFyour lights and appliances automatically.
- Refined appearance and made of fire resistant material, Safe and Durable.
- Overload protectioneasy to replace your traditional mechanical switch(Requires a neutral wire).
- The Smart Switch blends well with any room decor with its elegantminimal design with sensitive capacitive touch control
- Its LEDs can guide you at night when lights go off and you an simply tum it on.off by directly pressing.

### SPECIFICATIONS

Type: Wi-Fi Smart Touch Switch  
 Rated Current: 10A(Max)  
 Rated Voltage: 100-240V  
 Rated Power: 3-500W  
 Wireless Frequency:2.4GHz  
 Wireless standard:IEEE802.11b/g/n

## Instruction Manual

Smart Touch Switch

WiF

