

androidtv

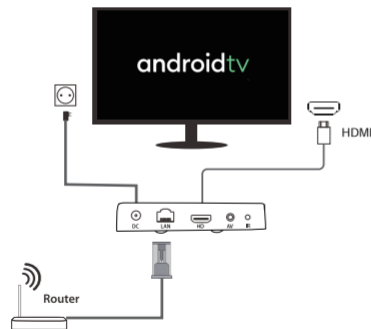
Hey Google

R3+ User Manual

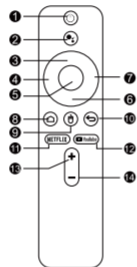


Installation

Plug the HDMI cable into the HDMI port on the TV, then plug the power cable into the power adapter and connect the infrared. Then, plug the three cables into the corresponding ports of the TV BOX respectively.



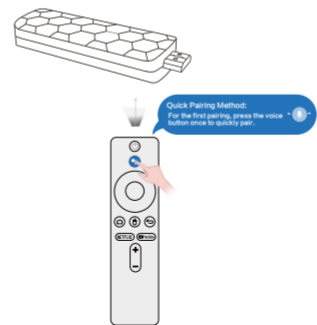
Remote Control:



- | | |
|-----------------|--------------|
| 1. Power on/off | 8.Home |
| 2. Voice button | 9.Mouse |
| 3. Up | 10. Return |
| 4. Left | 11. Netflix |
| 5.OK | 12. Youtube |
| 6. Down | 13. Vol up |
| 7. Right | 14. Vol down |

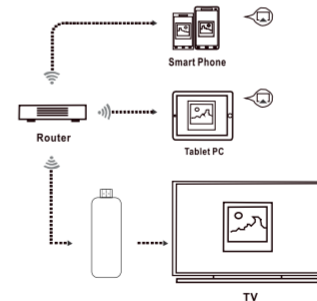
Bluetooth pairing:

- 1 Please put the remote control within 1m of the box, install the battery on the remote control, and press the red light on the remote control "voice key". The remote control will enter a high-frequency flickering state, wait for a few seconds, and the pairing is completed.
- 2 For the second pairing (reconnecting via Bluetooth), press any button on the remote control to reconnect.



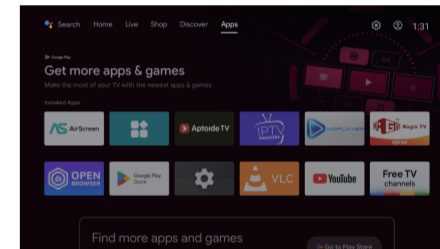
Multi-screen interconnection:

1. After the set-top box is successfully connected, the LAN port can be connected to the wired network or WIFI. (If there is no LAN port, you can directly connect to WIFI for use)
2. After the set-top box is successfully connected, the LAN port can be connected to the wired network or WIFI. (If there is no LAN port, you can directly connect to WIFI for use)
3. After the networking is successful, multiple screens can be shared on the same network.



Switch in the applications

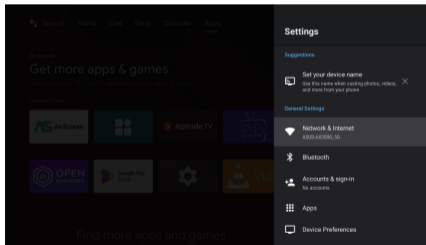
Click "My Apps" to view recently used programs, click program icon to switch application arbitrarily



WiFi connection:

1. Go to the main screen → Settings → Network → Select "Wi-Fi" to turn on WiFi function select "WiFi- Enter password – Connect to network"

2. After the network connection is successful, you can use it normally.

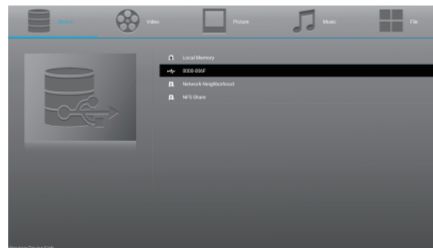


Application installation:

Please download the required software from your computer to the USB flash drive in APK format first. Then connect the USB flash drive to the USB port of the TV BOX.

After the connection is successful, find "File Browser" in the application, press OK to enter, and select the USB device you inserted. Find the software you downloaded and click Download. The "Device is being installed" logo will be displayed on the screen.

After the installation is complete, the software icon will be displayed on the application menu.



Productname: Android TV Stick

Model : R3+

Material: ABS

Manufacturer: Shenzhen SightBox

Technology Co.,Ltd

Address: CN-CN, Floor 5, Building D, Xingguang

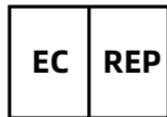
Industrial Park, No.4 Shihuan Road, Shilong

Community, Shiyan Street, Shenzhen City, Guang-

dong Province, Bao 'an District 44030

Email: 1722863122@qq.com

EU Authorized: MJCM SARRL



**78 avenue des
Champs Elysees
Bureau 326, Paris,
mjcm190928@
gmail.com**

+33 752907452

Made in China



Applicable Laws and Regulations :

(LVD) 2014/35/EU

(EMC) 2014/30/EU

(ROSH)(EU)2015/863 and (EU)2017/2102

Title, Date of standard/specification:

IEC 62321-3-1:2013

EN IEC 62368-1:2020+A11:2020

EN IEC 61000-3-2:2019+A1:2021+A2:2024

EN 61000-3-3:2013+A1:2019+A2:2021+AC:2022-01

IEC 62321-4:2013+AMD1:2017

IEC 62321-5:2013

IEC 62321-6:2015

IEC 62321-7-1:2015

IEC 62321-7-2:2017

IEC 62321-8:2017

Troubleshooting:

1.No display after power on?

Confirm your device is connected to the TV well and set the correct HD Input from your TV configuration.

2.TV has images but no sound?

Make sure your TV is not in mute and low volume.

3.Fail to connect to the network?

Make sure the Ethernet cable is properly connected. Make sure Wi-Fi is functional and your tv stick has a strong enough signal from your router.

4.Remote control failure?

• Replace the battery of the remote control with a new one, and make sure it is placed in the correct polarity.
• Make sure the remote control is within the range of the tv stick.

Go to the Setting menu to unpair and re-pair the remote control.

***Please use our accessories to avoid any risk.**

Safety instructions:



WARNING!

Under no circumstances should you try to repair the TV BOX by yourself, as this will invalidate the warranty.

• Place the device on a flat, firm and stable surface. Do not put it on a carpet or rug.

• Place the device in a well-ventilated location to prevent the accumulation of internal heat.

• Protect the device from high temperatures, humidity, water and dust.

Do not place any objects near your device that may damage it (e.g. liquid-filled objects or candles).

Do not mix old and new batteries and Do not mix alkaline, standard (carbon-zinc) or rechargeable (ni-cad, ni-mh, etc.) batteries.