

Xiaomi Smart Air Purifier 5 User Manual



WARNING

- When the power cord is damaged, it must be replaced with a genuine power cord purchased from the manufacturer or after-sales service department.
- This appliance can be used by children aged from 8 years and above and persons with reduced physical, sensory or mental capabilities or lack of experience and knowledge if they have been given supervision or instruction concerning use of the appliance in a safe way and understand the hazards involved.
- Children shall not play with the appliance. Cleaning and user maintenance shall not be made by children without supervision.
- Make sure the purifier is turned off and unplugged before performing the maintenance. Fix the grille with screw after cleaning fan blades and air duct.

Precautions

· Turn off and unplug the purifier before moving it.

- The purifier cannot turn on when the fan grille and the filter compartment cover are not installed properly.
 - Maintain a distance of at least 20 cm between the air inlets and walls or other objects.
 - The purifier must be placed on firm and flat floor.
-

- Prior to cleaning or other maintenance, the appliance must be disconnected from the supply mains.
 - Frequently remove dust, hair, and other particles from the outer mesh screen of the filter, so as to reduce the chance of bacteria growth.
 - Remove dust, hair, and particles from the purifier's air inlets to prevent a reduction of air intake.
 - Cover the air outlet to prevent dust, hair, and other particles from falling in when the purifier is left unused for a long time.
-

To avoid fire, electric shocks, or other damage, use the power cord and electrical outlet as instructed below:

- Do not excessively pull, twist or bend the power cord, as this may expose or break the cord's core.
 - The power cord must be plugged into a suitable electrical outlet.
 - Use the power cord that is provided with the purifier, do not use any third party power cords.
 - Always unplug the purifier before carrying out maintenance to or moving the air purifier.
-

· Immediately stop using the purifier when it makes unusual sounds, gives off bad odors, overheats, or its fan rotates irregularly.

- Do not stick your fingers or foreign objects into the protective parts, movable parts, air inlets, or air outlets.
 - Keep objects such as hairs or fabrics away from the purifier to avoid blocking the air inlets or air outlets.
 - Do not sit on, lean on or tilt the purifier.
 - When using in conjunction with gas-fueled appliances (such as gas stoves, gas heaters), please ventilate sufficiently to avoid carbon monoxide poisoning.
 - Do not pour liquids, nor throw powders or other small substances into the purifier's air outlet.
-

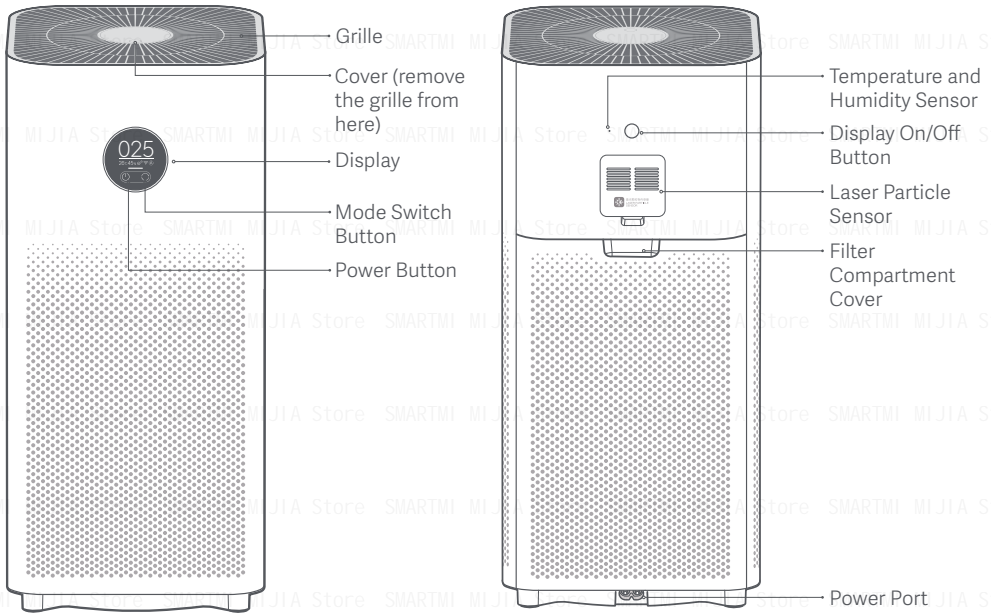
Do not use the purifier in the following circumstances, as they may result in electric shocks, fire, or other damage:

- Near open flames, such as candles, incense burners, stoves, fireplaces, cigarettes, firecrackers, lighters, multipurpose torches, candle lighters, or fire pans.
- Near appliances that generate high temperatures, such as electric heaters, fan heaters, electric foot warmers, electric stoves, or electric irons.
- Make sure no inflammable objects get into the purifier.
- In unstable locations where the purifier can easily fall over.
- In environments that are extremely hot, humid, or damp, such as bathrooms.

Product Overview

Read this manual carefully before use, and retain it for future reference.

Note: Illustrations of the product, accessories, and user interface in this user manual are for reference purposes only. The actual product and functions may vary due to product enhancements.

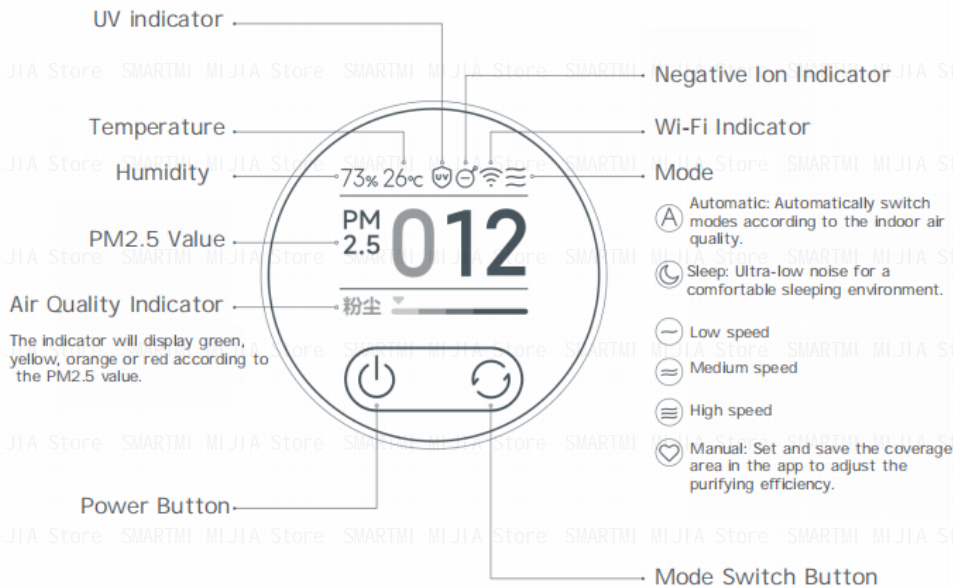


Front View

Rear View

Product Overview

Display Instructions



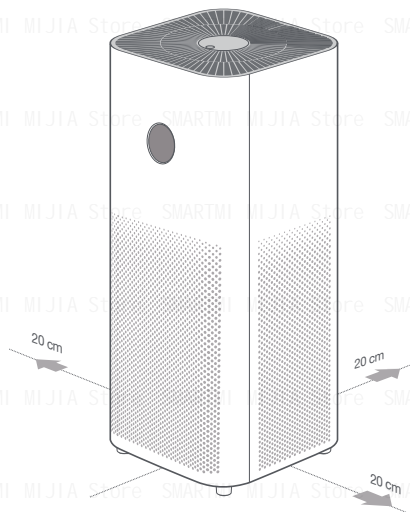
The negative ion function is enabled by default. The purifier can generate negative ions when it is working, and then the negative air ions (NAI) are produced through the reaction between the negative electron and the oxygen molecules. NAI is very good at trapping certain air pollutants.

The function can be enabled or disabled in the app. When it is enabled, the negative ion indicator is on; when it is disabled, the indicator is off.

Installation

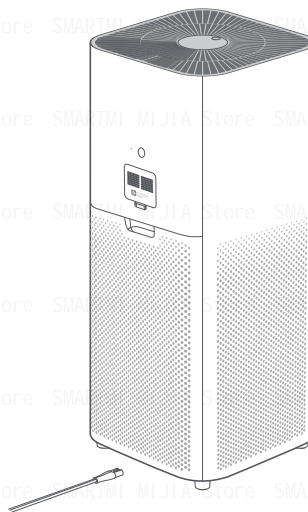
Placing the purifier

For optimal performance, make sure the distances between purifier's air inlets and other objects such as walls meet the requirements as suggested below.



Connecting to an electrical outlet

Connect the power cord to the power port at the bottom of the purifier and then plug it into an electrical outlet.



Note: It is recommended to keep doors and windows closed for a better purifying effect when using the purifier.

How to Use

Turning on/off

Tap the power button to turn on the purifier. While the purifier is on, tap the power button to turn it off.



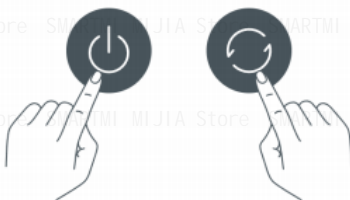
Switching mode

While the purifier is on, tap the mode switch button to cycle through modes.



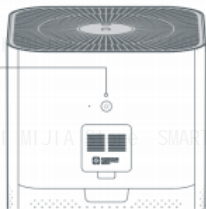
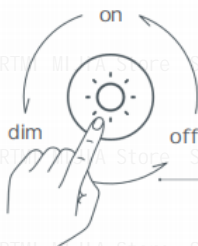
Restore Factory Settings

When the air purifier is on, simultaneously press and hold the On/Standby button and the Mode Switch button on the display for 7 seconds. After you hear the beep, the air purifier restarts and the factory settings are successfully restored.



Adjusting the display's brightness

Press the display on/off button to cycle through its brightness levels: on, dim, and off.



Enabling/disabling the child lock function

Press and hold the mode switch button for 7 seconds to enable or disable the child lock function. The purifier will make the corresponding notification sound and show the corresponding icon on the display.



disabling child lock function



Enabling child lock function

Filter Status Indicator



Filter Installation Indicator

The air purifier has not detected a filter or a genuine filter has not been installed.



Filter Life Indicator

When the air purifier detects a filter and its life is $>5\%$, disconnect the power cord or open the filter compartment door before turning the air purifier on. The remaining filter percentage will appear on the display.

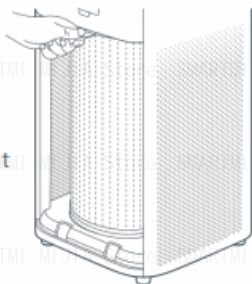


Filter Replacement Indicator

The filter replacement cycle is 6-12 months. When the air purifier detects a filter life of $\leq 5\%$, the remaining filter percentage and a QR code for purchasing filters will appear on the display each time the air purifier is turned on.

Replacing the Filter

Warning: Always power off the air purifier and unplug it before performing the following steps. Be sure to remove the new filter from its packaging before installing it.



Open the filter compartment door and pull the handle on the filter horizontally to remove it.

With the handle facing up, install the new filter into place and close the filter compartment door.

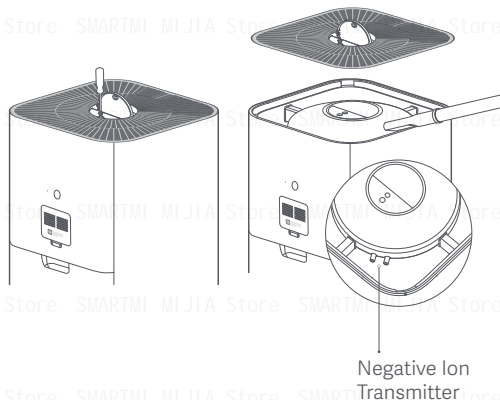
Daily Care & Maintenance

Warning: Make sure the purifier is turned off and unplugged before performing the following operations.

Cleaning fan blades and air duct

- Press the indentation on the cover to open it. Use a screwdriver to loosen the screw, and then pull the cover upwards to remove the grille.
- Use a vacuum cleaner to remove any dust from the air duct and fan blades, or wipe the dust off gently with a soft cloth.
- Use a brush or soft cloth to gently wipe the negative ion transmitter.
- Install the grille back and fasten the screw after cleaning.

Note: To avoid missing, the screw is not removable. Loosen the screw to remove the grille.



Negative Ion Transmitter

Note: To avoid damaging the purifier, do not rinse or spray the air duct and fan blades directly with water, or wipe them with a soaking wet cloth.

Note : Because this product is a Chinese version, please change the country to "China" when connecting the "MI HOME" APP, and the language can be set according to the local country. If your Mi Home account have connected to other devices in other regions, then it cannot be connected to China devices at the same time!!

How does the access the Mi Home App?

Set 1 : Click "Profile" , Enter "Additional settings"

Set 2 : Click "Region" , Change the Country to "Chinese mainland" , The language can be set according to the language of your country

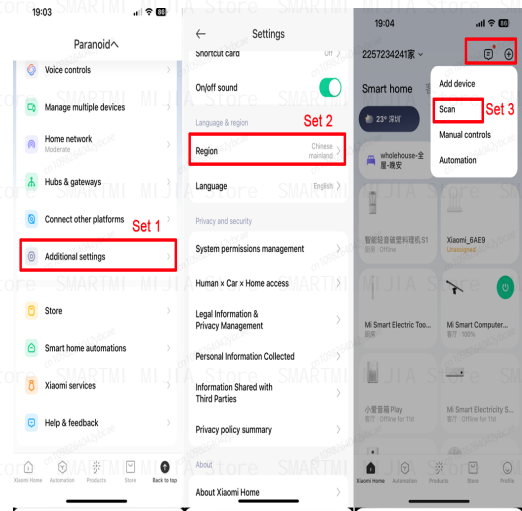
Set 3 : Tap "+" at the upper right corner , Select "Scan"

Set 4 : Click "Device Reset" , (press and hold the reset button for about 7 seconds, and the reset will be successful when you hear the voice prompt)

Set 5 : "Select wireless connection"

Set 6 : Operate according to the prompts on the page

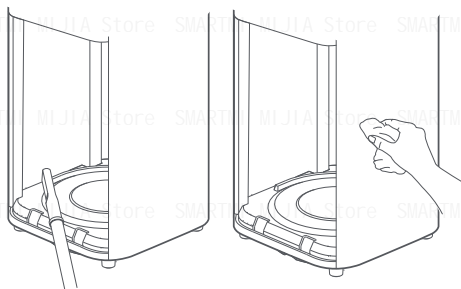
Set 7 : Wait for the binding to be successful.



Daily Care & Maintenance

Cleaning the filter compartment

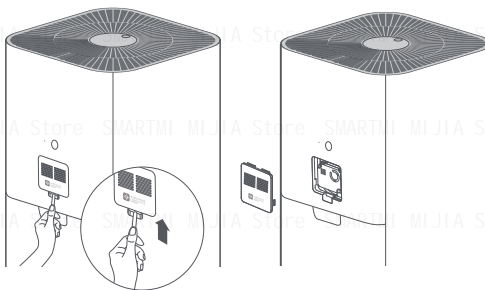
To ensure optimal ventilation and purification, use a vacuum cleaner to remove any dust from the air inlets and the filter compartment, or wipe these areas gently with a soft cloth.



Note: To avoid damaging the purifier, do not rinse or spray the filter compartment directly with water, or wipe it with a soaking wet cloth.

Cleaning the laser particle sensor

Use a non-sharp tool to open the cover of the laser particle sensor, then use an air blow gun or hair dryer to clean the filter on the cover and the sensor, as illustrated in the figure.



Note: Do not use hot air.

Specifications

Name: Xiaomi Smart Air Purifier 5

Model: AC-M25-SC

Item Dimensions: 250 × 250 × 555 mm

Net Weight: Approx. 5.2 kg

Effective Coverage: 28–48 m²*

Rated Voltage: 100–240 V~

Rated Frequency: 50/60 Hz

Rated Power: 40 W

Noise Level: ≤64 dB(A)

*Calculated according to standard GB/T 18801–2015

RF Specification:

Wi-Fi 2.4 G (2400–2483.5 MHz), Max. RF Output Power: <20 dBm

RFID (13.56 MHz), Max. Magnetic Field Strength: <60 dBμA/m@10 m

Under normal use of condition, this equipment should be kept a separation distance of at least 20cm between the antenna and the body of the user.

Network Standby Power Consumption: < 2.0 W

Particle Purification Efficiency: High

Formaldehyde Purification Efficiency: High

Particle's Clean Air Delivery Rate (CADR Particle): 400 m³/h

Formaldehyde's Clean Air Delivery Rate (CADR Formaldehyde): 150 m³/h

Wireless Connectivity: Wi-Fi IEEE 802.11 b/g/n 2.4 GHz

Storage Temperature: -10°C to 40°C

Storage Humidity: 5%–90%

Production Date: See packaging

For details of the importer, please refer to the box.

Regulatory Compliance Information

Europe — EU declaration of conformity



Hereby, Beijing Smartmi Electronic Technology Co., Ltd. declares that the radio equipment - Xiaomi Smart Air Purifier 4 , type AC-M16-SC is in compliance with Directive 2014/53/EU. The full text of the EU declaration of conformity is available at the following internet address: <http://www.mi.com/global/service/support/declaration.html>

Disposal and recycling information



All products bearing this symbol are waste electrical and electronic equipment (WEEE as in directive 2012/19/EU) which should not be mixed with unsorted household waste. Instead, you should protect human health and the environment by handing over your waste equipment to a designated collection point for the recycling of waste electrical and electronic equipment, appointed by the government or local authorities. Correct disposal and recycling will help prevent potential negative consequences to the environment and human health. Please contact the installer or local authorities for more information about the location as well as terms and conditions of such collection points.



WARRANTY NOTICE

THIS WARRANTY GIVES YOU SPECIFIC RIGHTS, AND YOU MAY HAVE OTHER RIGHTS CONVEYED BY LAWS OF YOUR COUNTRY, PROVINCE OR STATE. INDEED, IN SOME COUNTRIES, PROVINCES OR STATES, CONSUMER LAW MAY IMPOSE A MINIMUM WARRANTY PERIOD. OTHER THAN AS PERMITTED BY LAW, XIAOMI DOES NOT EXCLUDE, LIMIT OR SUSPEND OTHER RIGHTS YOU MAY HAVE. FOR A FULL UNDERSTANDING OF YOUR RIGHTS WE INVITE YOU TO CONSULT THE LAWS OF YOUR COUNTRY, PROVINCE OR STATE.

1.LIMITED PRODUCT WARRANTY

XIAOMI warrants that the Products are free from defects in materials and workmanship under normal use and use in accordance with the respective Product user manual, during the Warranty Period.

The duration and conditions related to the legal warranties are provided by respective local laws. For more information about the consumer warranty benefits, please refer to Xiaomi's official website <https://www.mi.com/en/service/warranty/>.

Xiaomi warrants to the original purchaser that its Xiaomi Product will be free from defects in materials and workmanship under normal use in the period mentioned above.

Xiaomi does not guarantee that the operation of the Product will be uninterrupted or error free.

Xiaomi is not liable for damages arising from non-compliance with the instructions related to the use of the Product.

2.REMEDIES

If a hardware defect is found and a valid claim is received by Xiaomi within the Warranty Period, Xiaomi will either (1) repair the product at no charge, (2) replace the product, or (3) refund the Product, excluding potential shipping costs.

3.HOW TO OBTAIN WARRANTY SERVICE

To obtain warranty service, you must deliver the Product, in its original packaging or similar packaging providing an equal degree of Product protection, to the address specified by Xiaomi. Except to the extent prohibited by applicable law, Xiaomi may require you to present proofs or proof of purchase and / or comply with registration requirements before receiving warranty service.

4.EXCLUSIONS AND LIMITATIONS

Unless otherwise stipulated by Xiaomi, this Limited Warranty applies only to the Product manufactured by or for Xiaomi and identifiable by the trademarks, trade name or "Xiaomi" or "Mi" logo.

The Limited Warranty does not apply to any (a) Damage due to acts of nature or God, for example, lightning strikes, tornadoes, flood, fire, earthquake or other external causes; (b) Negligence; (c) Commercial use; (d) Alterations or modifications to any part of the Product; (e) Damage caused by use with non-Xiaomi products; (f) Damage caused by accident, abuse or misuse; (g) Damage caused by operating the Product outside the permitted or intended uses described by Xiaomi or with improper voltage or power supply; or (h) Damage caused by service (including upgrades and expansions) performed by anyone who is not a representative of Xiaomi.

It is your responsibility to backup any data, software, or other materials you may have stored or preserved on the product. It is likely that the data, software or other materials in the equipment will be lost or reformatted during the service process, Xiaomi is not responsible for such damage or loss.

No Xiaomi reseller, agent, or employee is authorized to make any modification, extension, or addition to this Limited Warranty. If any term is held to be illegal or unenforceable, the legality or enforceability of the remaining terms shall not be affected or impaired.

Except as prohibited by laws or otherwise promised by Xiaomi, the after-sales services shall be limited to the country or region of the original purchase.

Products which were not duly imported and/or were not duly manufactured by Xiaomi and/or were not duly acquired from Xiaomi or a Xiaomi's official seller are not covered by the present warranties. As per applicable law you may benefit from warranties from the non-official retailer who sold the product. Therefore, Xiaomi invites you to contact the retailer from whom you purchased the product.

The present warranties do not apply in Hong Kong and Taiwan.

5.IMPLIED WARRANTIES

Except to the extent prohibited by applicable law, all implied warranties (including warranties of merchantability and fitness for a particular purpose) will have a limited duration up to a maximum duration of this limited warranty. Some jurisdictions do not allow limitations on the duration of an implied warranty, so the above limitation will not be applied in these cases.

6.DAMAGE LIMITATION

Except to the extent prohibited by applicable law, Xiaomi shall not be liable for any damages caused by accidents, indirect, special or consequential damages, including but not limited to loss of profits, revenue or data, damages resulting from any breach of express or implied warranty or condition, or under any other legal theory, even if Xiaomi has been informed of the possibility of such damages. Some jurisdictions do not allow the exclusion or limitation of special, indirect, or consequential damages, so the above limitation or exclusion may not apply to you.

7.XIAOMI CONTACTS

For customers, please visit the website: <https://www.mi.com/en/service/warranty/>

The contact person for the after-sale service may be any person in Xiaomi's authorized service network, Xiaomi's authorized distributors or the final vendor who sold the products to you. If in doubt please contact the relevant person as Xiaomi may identify.

Manufactured by: Beijing Smartmi Electronic Technology Co., Ltd.

(a Mi Ecosystem company)

Address: Room 201-203, Unit 6, Building A, No. 66, Zhufang Road, Qinghe, Haidian District, Beijing

For further information, please go to www.mi.com

For detailed e-manual, please go to www.mi.com/global/service/userguide

Made in China

Importer:

Beryko s.r.o.

Na Roudné 1162/76, 301 00 Plzeň

www.beryko.cz