

Mijia High Speed Water Ion Hair Dryer H701 Instruction Manual

Please read this manual carefully before using the product and keep it in a safe place.

Safety notice

Please read this manual carefully before using the product and keep it in a safe place.

To reduce malfunction, electric shock, injury, fire, death, and damage to equipment or property to avoid the risk of damage, be sure to observe the following safety precautions.

- warn**
- Power cord and power plug**
- *Do not use when the power cord or plug is damaged or hot, otherwise it may cause burns, injury, electric shock or fire caused by short circuit.
 - *Do not use when the power plug inserted into the socket is loose, otherwise it may cause burns, injury, electric shock or fire caused by short circuit.
 - *Do not unplug or plug in the power plug with wet hands, otherwise it may cause electric shock.
 - *Do not damage, modify, bend, pull, twist the power cord or place it on the power supply. Place heavy objects on the power cord or squeeze the power cord, otherwise it may cause electric shock or Short circuit may cause fire.
 - *When unplugging the power plug, do not pull on the power cord and be sure to hold the power plug. Unplug it, otherwise the power cord may be disconnected, resulting in burns, electric shock or Short circuit may cause fire.
 - * Please fully insert the power plug into the socket when using; be sure to use 220V~ voltage: please use the socket alone and do not use the power strip, otherwise it may cause electric shock or cause a fire due to short circuit.
 - *If the power cord is damaged, it must be replaced by professionals from the manufacturer, its maintenance department or similar departments in order to avoid danger.

Use and storage

- *Do not block or insert foreign objects into the air outlet or air inlet, otherwise it may cause burns, electric shock or fire due to short circuit.
- *Do not soak the hair dryer in water.
- *Do not use the hair dryer in a humid environment.
- *Please keep the hair dryer dry, otherwise it may cause electric shock.
- *Do not use with wet hands, otherwise electric shock or fire may occur due to short circuit.
- *Do not use near petroleum gas or other flammable products (such as volatile agents, paint thinners, sprays, etc.), otherwise it may cause an explosion or cause a fire due to short circuit.
- *Do not leave the hair dryer running, otherwise it may cause a fire due to short circuit.
- *Do not store in a highly humid place, otherwise it may cause electric shock or cause a fire due to short circuit.
- *Do not store within the reach of children and infants, otherwise it may cause electric shock and injury.
- *Do not repair, disassemble or modify this product by yourself, otherwise you may be injured due to fire or improper operation.

When repairs are needed, please contact after-sales service

*When using a hair dryer in the bathroom, unplug it after use as there is still a danger of being near water even after the hair dryer is turned off.

*For added protection, it is recommended to install a residual current device (RCD) with a rated residual operating current not exceeding 30mA in the electrical circuit supplying the bathroom. Consult your RCD installer.

*This product is not suitable for use by people (including children) with physical, sensory or mental disabilities, or lack of experience and knowledge. A guardian must supervise and guide the use of this product, and be responsible for the safety of the user.

responsibility, otherwise injuries or other accidents may occur.

*Cleaning and user maintenance cannot be performed by children without supervision. Children should be supervised to ensure they do not use this product as a toy.



This symbol on the fuselage means "Prohibited use in bathing or showering."

WARNING: Do not use this appliance near bathtubs, showers, washbasins or other vessels filled with water.

Notice

If an exception or malfunction occurs

*When an abnormality or malfunction occurs, such as: no air blowing, frequent stoping, or internal redness and smoke coming out, please stop using it immediately, unplug the power plug, and contact after-sales service. Otherwise, it may cause electric shock, injury, or fire due to short circuit.

*During use, the air outlet and air nozzle may become hot. Please do not touch it with your hands, otherwise it may cause burns.

* Avoid dropping the hair dryer or subjecting it to strong impact, otherwise it may cause electric shock or cause a fire due to short circuit.

*When using, please prevent hair from getting caught in the air inlet and causing danger.

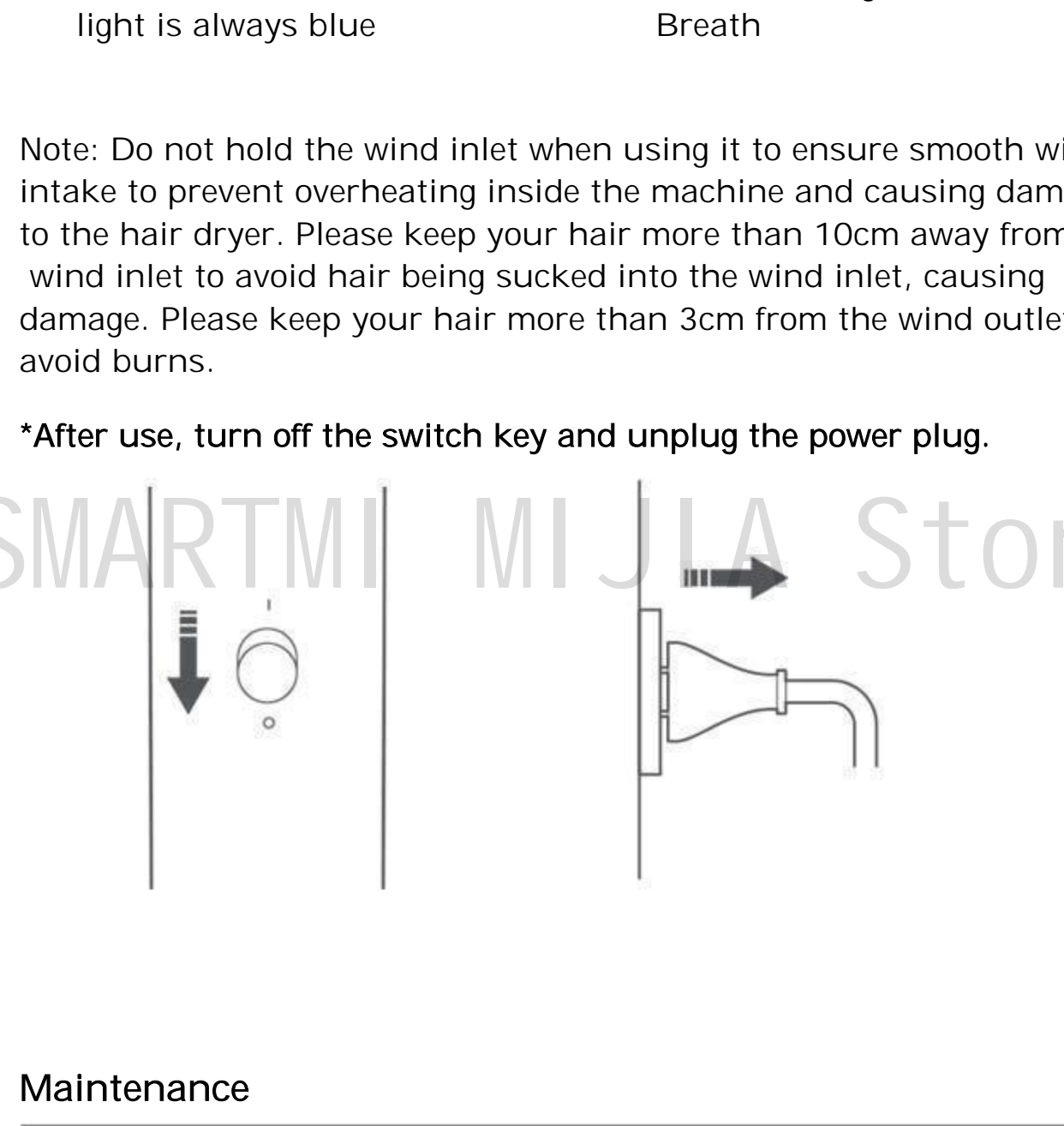
*Do not use on infants and young children, otherwise it may cause burns.

*To avoid damage to the power cord, please do not wrap the power cord around this product.

*Do not use the hair dryer for other purposes, such as drying clothes or other items.

Product Description

Tip: The product, accessories, user interface and other illustrations in the manual are schematic diagrams and are for reference only. Due to product updates and upgrades, there may be slight differences between the actual product and the diagram. Please refer to the actual product.

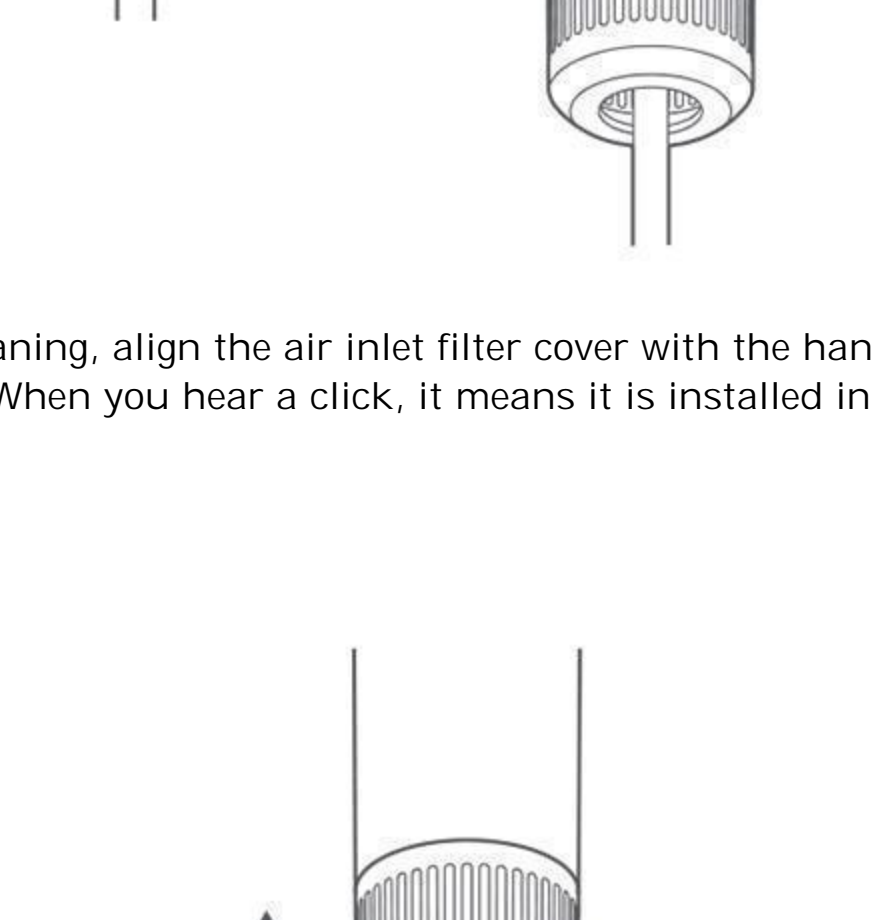


USE

Install the Wind nozzle

*Align the Wind nozzle with the magnetic interface, and it can be easily installed successfully. The Wind nozzle can be rotated 360° for easy use.

Note: Please install the Wind nozzle when the power is turned off. Do not adjust or install or remove the Wind nozzle during use to avoid burns.



Turn on and off

*First confirm that the power switch is set to the [O] position to turn off the machine, then insert the power plug into the socket, and then push the power button to the [I] position to turn on the machine. After turning on the machine, the wind speed and wind temperature indicators light up, and the indicator light ring is light blue.

*Push the switch button down to the [O] position to turn off the machine. Please unplug it in time after use.

*The next time you turn it on, it will default to the wind speed and temperature settings used when it was turned off last time.



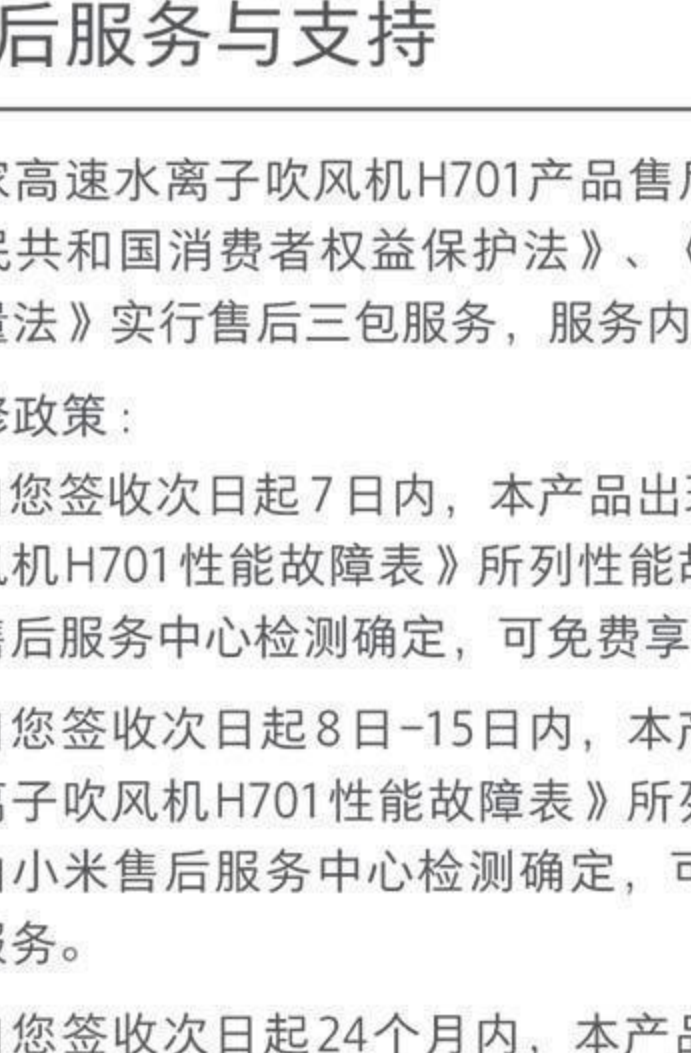
Switch wind speed

* Short press the wind speed button, cycle switch soft wind, strong wind, strong wind.



Switch wind temperature

*Short press the wind temperature button cycle cold wind, warm wind, hot wind, and hot and cold circulating wind.

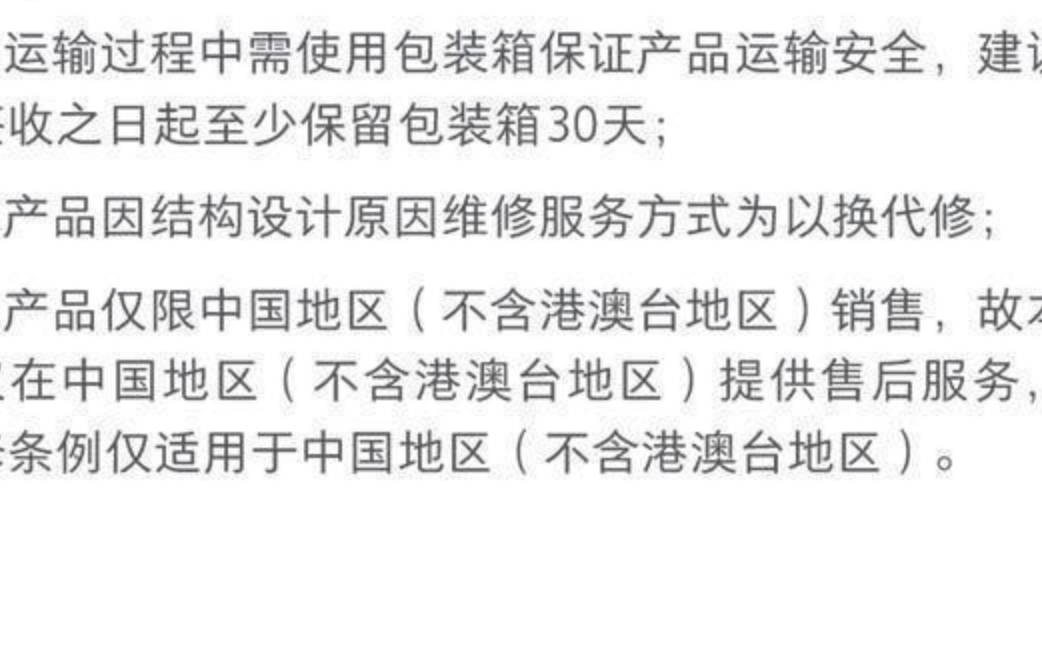


hair care mode

After the hair care mode is turned on, the wind temperature is constant at 57±5℃ and the gentle wind speed helps the hair to be healthy, smooth and shiny.

*Short press the hair care mode button to enter hair care mode. After this mode is turned on, the hair care mode indicator light always on in ice blue, and the indicator light ring breathes in ice blue.

*Short press any key to exit hair care mode and restore the previous wind speed and temperature settings.



Note: Do not hold the wind inlet when using it to ensure smooth wind intake to prevent overheating inside the machine and causing damage to the hair dryer. Please keep your hair more than 10cm away from the wind inlet to avoid hair being sucked into the wind inlet, causing damage. Please keep your hair more than 3cm from the wind outlet to avoid burns.

***After use, turn off the switch key and unplug the power plug.**

Maintenance

Warning: Before cleaning or maintaining the hair dryer, be sure to turn off the switch and unplug the power plug.

* Hold the handle tightly, pull down the air inlet filter cover, and remove it from the handle.

*Use a dry, lint-free cloth, soft-bristled brush or toothbrush to remove the attachments on the surface of the air inlet filter cover and internal filter.

Note: Do not clean the air inlet filter cover and filter with water, otherwise it may cause malfunction.

*After cleaning, align the air inlet filter cover with the handle and insert it. When you hear a click, it means it is installed in place.

Tip:

*Please clean the fuselage regularly with a clean soft cloth, and use a cotton swab or soft brush to clean the attachments on the air outlet.

*Do not press or rub the air inlet and outlet with nails or sharp objects to avoid damaging the product.

*Do not use alcohol, nail polish remover or detergent to clean the hair dryer, otherwise it may cause malfunction, cracking or fading.

部件名称	有害物质					
	铅 (Pb)	汞 (Hg)	镉 (Cd)	六价铬 (Cr(VI))	多溴联苯 (PBB)	多溴二苯醚 (PBDE)
塑料件	○	○	○	○	○	○
五金件	×	○	○	○	○	○
发热体组件	○	○	○	○	○	○
电机组件	×	○	○	○	○	○
电路控制组件	×	○	○	○	○	○
电源线	○	○	○	○	○	○
附件	○	○	○	○	○	○

本表格依据SJ/T 11364的规定编制。

○:表示该有害物质在该部件所有均质材料中的含量均在GB/T 26572规定的限量要求以下。

×:表示该有害物质至少在该部件的某一均质材料中的含量超出GB/T 26572规定的限量要求。

(本产品符合RoHS环保要求。目前国际上尚无成熟技术可以替代或减少电子陶瓷、光学玻璃、钢及铜合金内的铅含量。)

基本参数

产品名称: 米家电吹风

额定电压: 220V~

额定频率: 50Hz

额定功率: 1600W

产品尺寸: 92.5 × 68 × 258.5mm (不含风嘴)

执行标准: GB 4706.1-2005, GB 4706.15-2008

GB 17625.1-2022, GB 4343.1-2018

本说明书适用于型号: GSH701LXT, GSH701LXP

产品中有害物质的名称及含量

名称	性能故障
吹风机	1. 开关键失效 2. 产品运行中不出冷/热风 3. 产品运行中内部发红, 有烟冒出

非保修条例

• 未经授权的维修、误用、碰撞、疏忽、滥用、进液、事故、改动、不正确的使用非本产品配件, 或撕毁、涂改标贴、防伪标记。

• 已超过三包有效期。

• 因不可抗力造成的损坏。

• 不符合《米家高速水离子吹风机H701性能故障表》所列性能故障的情况。

• 因人为原因导致本产品及其配件产生《米家高速水离子吹风机H701性能故障表》所列性能故障。

提示:

• 因运输过程中需使用包装箱保证产品运输安全, 建议您自签收之日起至少保留包装箱30天;

• 本产品因结构设计原因维修服务方式为以换代修;

• 本产品仅限中国地区 (不含港澳台地区) 销售, 故本产品仅在中国地区 (不含港澳台地区) 提供售后服务, 本保修条例仅适用于中国地区 (不含港澳台地区)。